



# **eduroam: The Value of WLAN measurements for the R&E Community**

RIPE69 – MAT-WG – Wednesday, 5 November 2014

Brook Schofield, GÉANT Association  
[schofield@terena.org](mailto:schofield@terena.org)



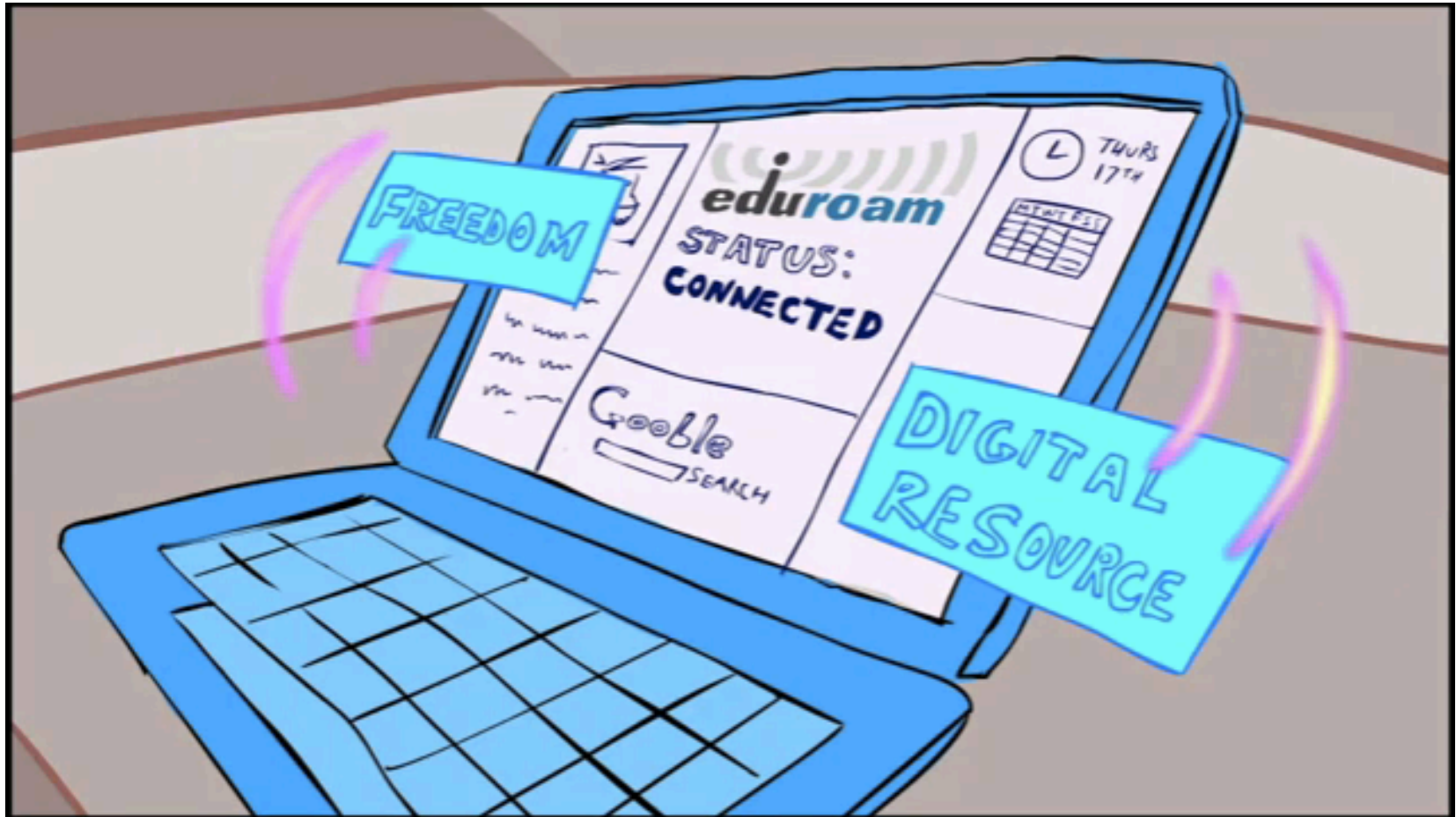
# About me...

- **Brook Schofield**  
**GÉANT Association**  
**<mailto:schofield@terena.org>**  
**<skype://brookschofield>**  
**tel:+31651553991**  
**<http://terena.org/~schofield>**



Australian living in The Netherlands.  
Grew up on the island state of Tasmania.  
1<sup>st</sup> Chair of the AARNet eduroam Project Group.  
Secretary of the Global eduroam Governance Committee.





Visit <http://youtu.be/TVCmcMZS3uA>



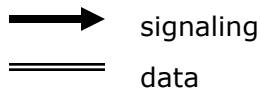
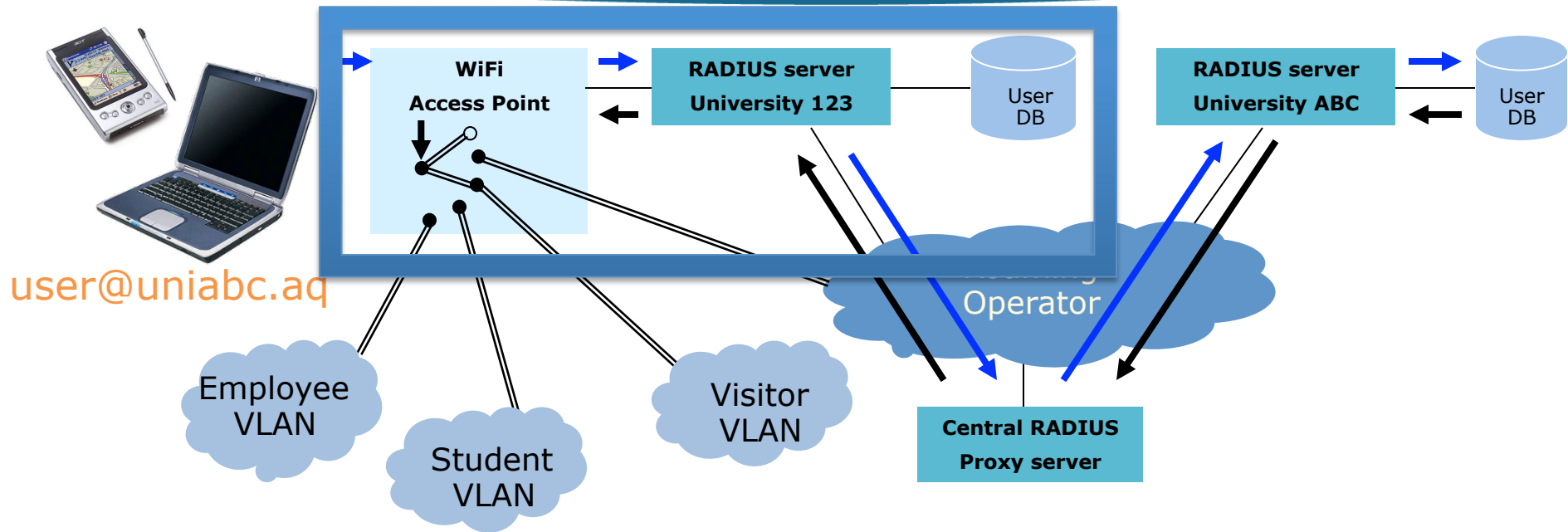
# What is eduroam?



- **eduroam is a global wireless roaming network, based on:**
  - WPA2 & 802.1X (network access control)
  - RADIUS (infrastructure to transport credentials)
  - Trust fabric (RADIUS hierarchy and policy)
  - No web splash screen portal or shared passwords
- **Started in the TERENA Task Force “Mobility”**
- **eduroam = education roaming**



# eduroam Infrastructure



- Trust based on national policy
- Security based on 802.1X/RADIUS
- VLAN assignment to separate users



# What else is like eduroam?



- eduroam is similar to other wireless hotspots



WiFi Powered by  
**The Cloud**

A BSkyB company

**xfinity**



- ...but eduroam is a service via an overlay
  - We don't run our own hotspot infrastructure





- Worst “franchise” in the world



**Ashley Lawrence** @AshNLawrence · Oct 13

I hate **eduroam**. Thank you for ruining my life.

Expand

← Reply



**harry** @mamoswines · Oct 17

imagine a world where **eduroam** actually worked consistently

Expand

← Reply ↻ Retweet



**ZooMass** @ZooMass · Sep 15

I'm going to start calling my girlfriend **eduroam** so maybe she'll go down on me 12 times a day too.

Expand

← Reply ↻ Retweet ★ Favorite ... More



- 2009 - RIP
- AARNet
- SheevaPlug
- ≈€100
- Didn't Scale
- Not a community





# Active Monitoring eduroam Node (AMeN)

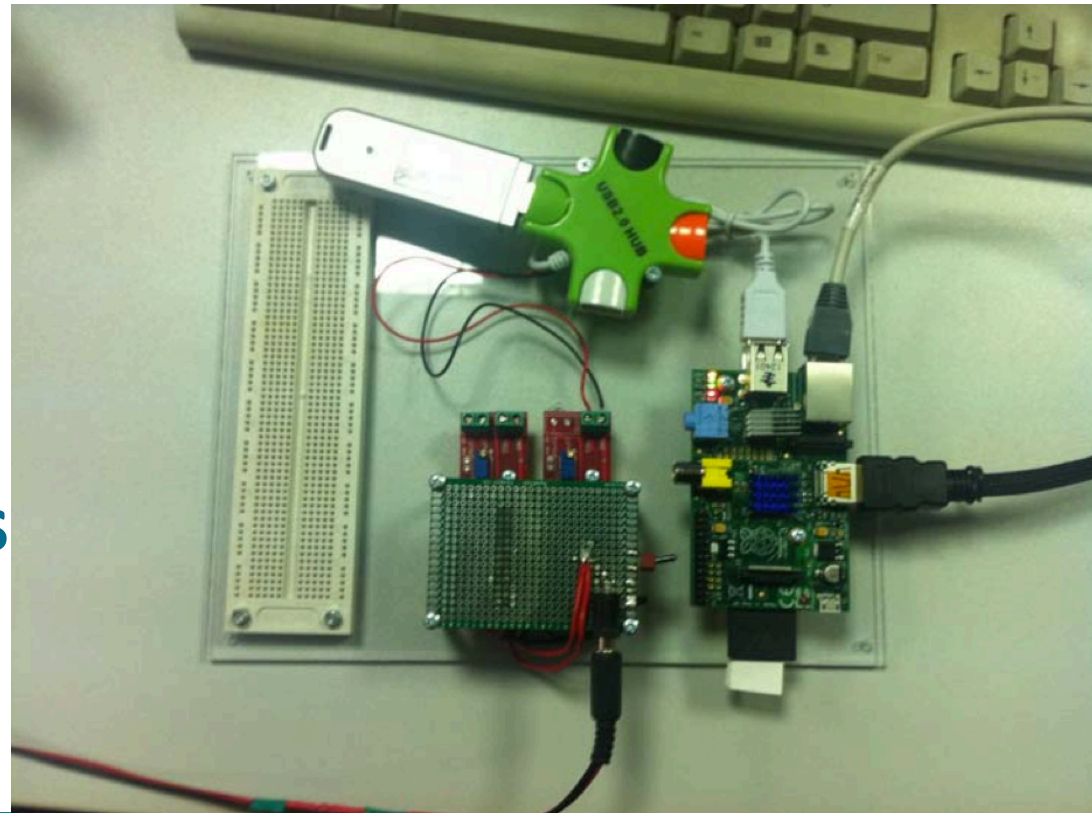
- 2009 – 2014 (still running)
- Alix System
- SURFnet
- ≈€150
- Deployed at 14 sites
- Deployment continues





# Srce Raspberry Pi (“Frankenprobe”)

- 2012 → Current
- Raspberry Pi
- Srce
- ≈€100
- Not a solution
- Scanning for SSIDs & Signal Quality





- 2012 – 2014 (still running)
- wpa\_supplicant & scripts
- Growing from 20 to 200 probes now
- TP-Link MR3020
- $\approx$  Atlas v3

lboro.ac.uk

- General
- eduroam UK NAGIO
- eduroam UK config
- eduroam UK probes
- my account
- log out

Home





# Why WLAN measurements on Atlas?



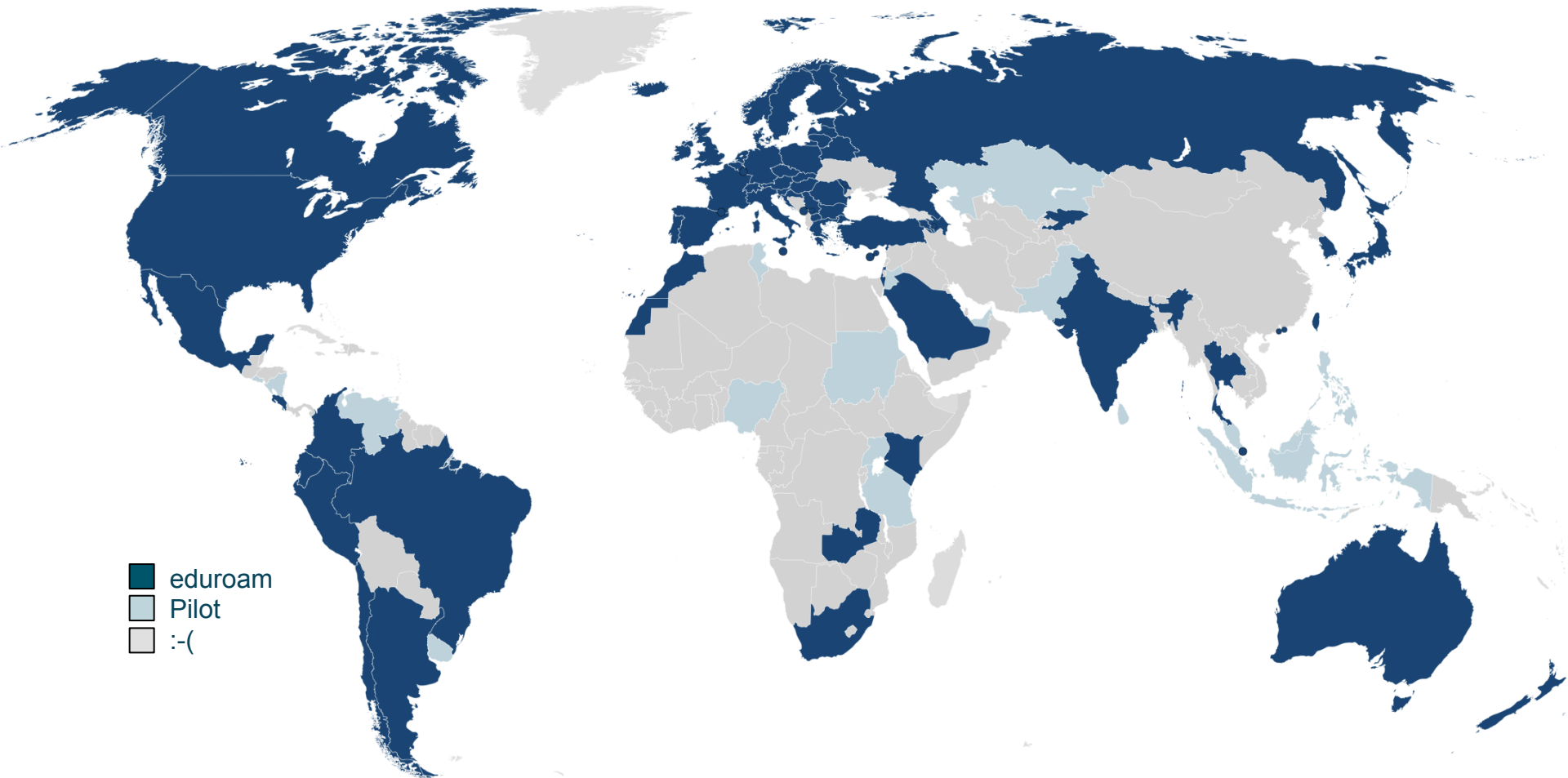
- **Janet/Loughborough Uni as PoC**
  - Proof that it can work...
    - ...previous solutions show utility – but not scale.
- **eduroam  $\approx$  Hotspot 2.0**
  - Hotspot 2.0 + Next Generation Hotspot both 802.1X
    - WLAN hotspot providers might be interested in sponsoring
- **Atlas has the footprint + infrastructure**
  - Can scale to >7k probes
  - Datasets can be public + available over time



- **Bigger footprint in the R&E space**
  - Currently many countries, ASNs and networks connected to GÉANT without an Atlas Probe
  - GÉANT and associated networks reach xx countries
- **Sponsorship from the eduroam community**
  - Desire to define eduroam quality will encourage Atlas deployment
  - We willing to financially support Atlas



# Where is eduroam?





# Where is eduroam?





- **Anti-Pattern Deployment**

- AMeN, Loughborough & “Frankenprobe” will continue to be investigated and deployed
  - SURFnet willing to get out of the AMeN business
- **These tools don’t benefit RIPE or Atlas**
  - Parallel network for measurements
- **Expenditure of “public” money on duplication**
  - Atlas is more than probes...
  - Huge backend infrastructure & improvements

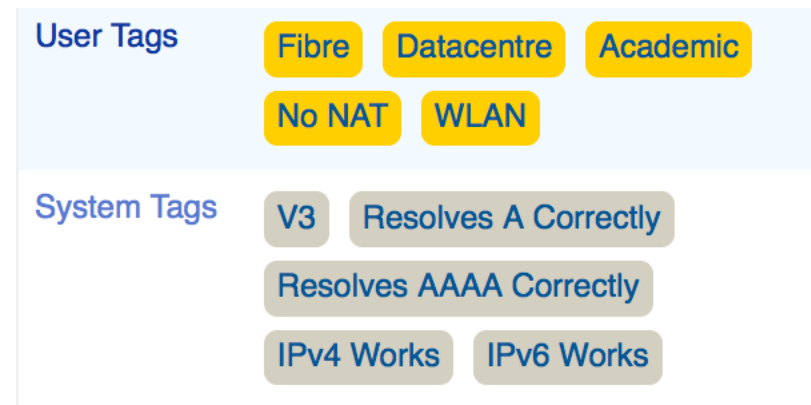


- **PoC code → Running on Atlas Dev/Test**
  - What's the current status?
- **An API for WLAN measurements**
  - ~~Scan~~
  - Associate
  - Authenticate (open or 802.1X)
  - Measurement (dns, ping, traceroute, cert - optional)
  - Report
- **Orchestration + Visualisation of WLAN Tests**
  - Still a responsibility of eduroam Operations Team
  - Community can built on this infrastructure



- **How to roll out WLAN capability?**

- User Tag?
- Opt-in vs Opt-out
- Other options...



- **Timeline**

- How important in relation to the roadmap?
- Currently “In Progress”



# Let's Discuss...







Brook Schofield  
[schofield@terena.org](mailto:schofield@terena.org)